



American
Urological
Association

Education & Research, Inc.

Medical Urology: Hypertension, Fluids and Electrolytes, Nephrology

Sarah Elfering, MD
University of Minnesota

Outline

- GFR
- Solute transport and tubule function
- Disorders of water balance
- Acid base review
- Hypertension

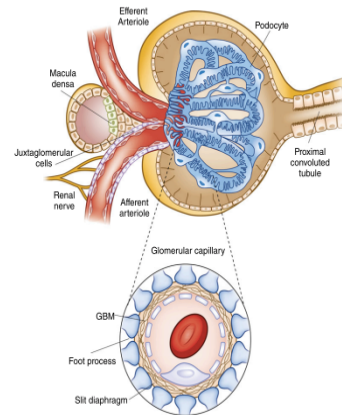


American
Urological
Association

Education & Research, Inc.

Glomerular Structure

- Filter = glomerulus
- Endothelial cells
- Basement membrane
- Visceral epithelial cells
= podocyte



Glomerular disease

Hematuria

Proteinuria



American
Urological
Association
Education & Research, Inc.

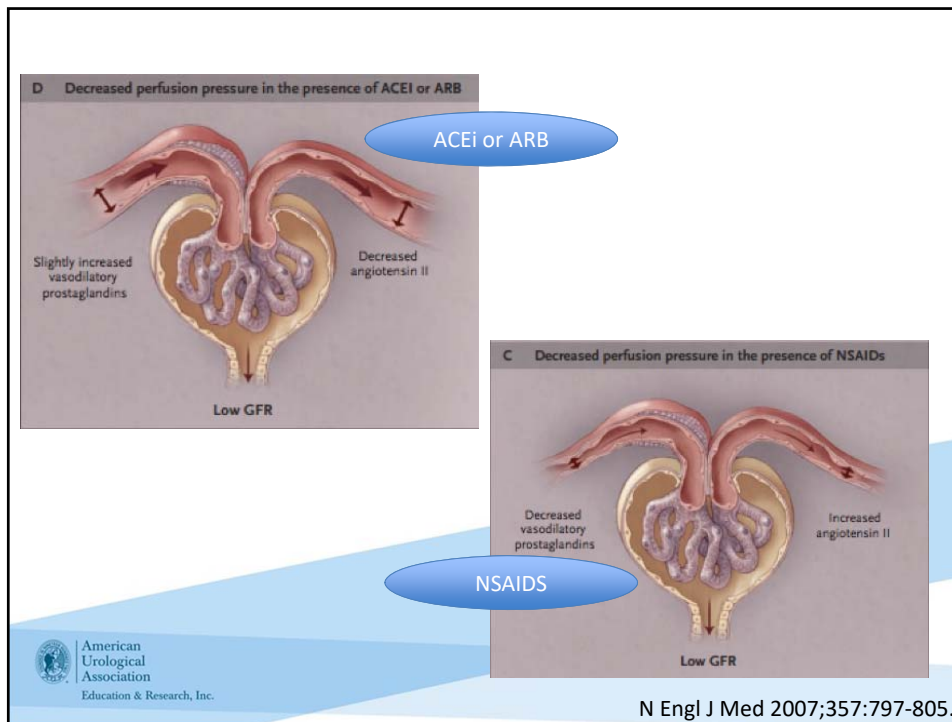
Clin J Am Soc Nephrol 9: 1461–1469, 2014

Determinates of GFR

- Blood flow in the glomerulus
 - determined by afferent and efferent artery resistances
- Net ultrafiltration pressure across the glomerular capillary
 - Related to hydraulic and oncotic pressure



American
Urological
Association
Education & Research, Inc.



Estimate of GFR (eGFR)

- MDRD is the most common equation to estimate GFR
- Developed in patients with stable kidney disease
- Does not perform well in patients with normal renal function
 - Will under-estimate GFR
- Cannot use when creatinine is rising
 - i.e. in AKI with rising creatinine, eGFR is unreliable

Case Examples

- 30 yo man, competitive body builder with large muscle mass
 - Creatinine is 2 mg/dL with eGFR 48 ml/min
 - What is GFR?
 - Iohexol based GFR >90 ml/min
- 70 yo man in ICU with septic shock. Creatinine went from 1 to 2 mg/dL in 24 hours. Urine output is 25 ml/24 hours
 - eGFR reported as 33
 - What is true GFR?
 - zero



American
Urological
Association
Education & Research, Inc.

Diseases of the Glomerulus

Nephritic

- Hematuria
 - Red blood cell casts
 - Dysmorphic red blood cells
- Proteinuria
 - Usually 1-3 grams/24 hours
- Hypertension

Nephrotic

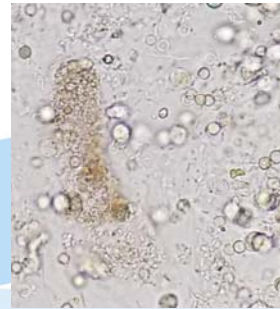
- Heavy proteinuria
 - >3.5 grams/24 hours
- Edema
- hypoalbuminemia



American
Urological
Association
Education & Research, Inc.

Question

- A 45 year old man with history of hepatitis C and tobacco use has microscopic hematuria. His creatinine is 1.3 mg/dL and urine protein is 1.5 gram in 24 hours. Which test is likely to aid in diagnosis?
- A – cystoscopy
- B – non-contrast CT scan
- C – kidney biopsy
- D – urine culture



RBC cast



American
Urological
Association
Education & Research, Inc.

Key Points

- Altering renal hemodynamics impacts GFR
- Creatinine based estimated GFR formulas cannot be used if creatinine is not stable
- Hematuria + proteinuria suggests glomerular disease



American
Urological
Association
Education & Research, Inc.

Solute and Water Transport



American
Urological
Association
Education & Research, Inc.

Sodium

- 65% reabsorbed in proximal tubule
- 25% reabsorbed Ascending Limb of Henle
- Remainder reabsorbed in Distal Convoluted Tubule and Collecting Duct

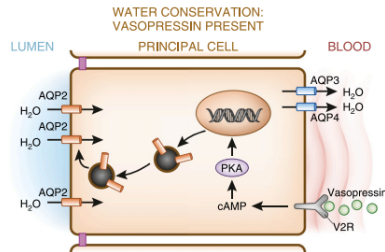


American
Urological
Association
Education & Research, Inc.

Water

- 65% reabsorbed in proximal tubule
- Fine tuning of hydration occurs in collecting duct
 - if water loading - 5% reabsorbed
 - if dehydrated - >24% reabsorbed

Desmopressin increases water reabsorption



Tubular Transport of Substances Related to Kidney Stones

- Calcium
 - Majority is reabsorbed in proximal tubule
 - Reabsorbed via solute drag

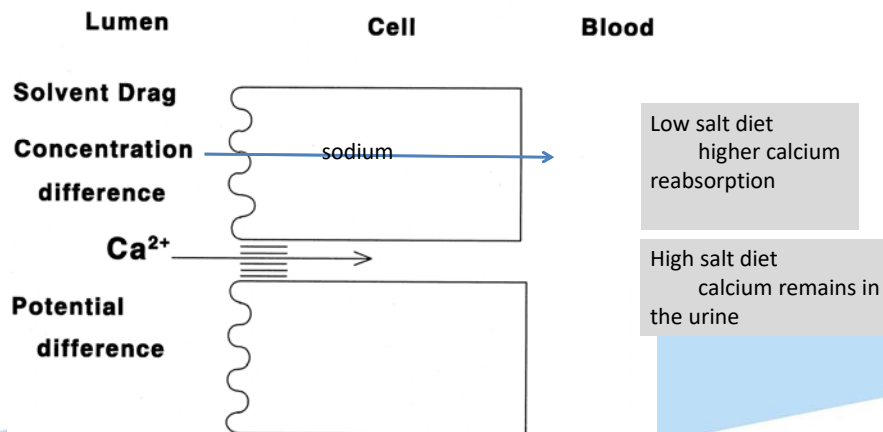
Low salt diet

more sodium reabsorption

calcium is dragged from urinary space to blood

- Distal calcium channels regulated by PTH
 - High PTH and vitamin D – higher calcium reabsorption

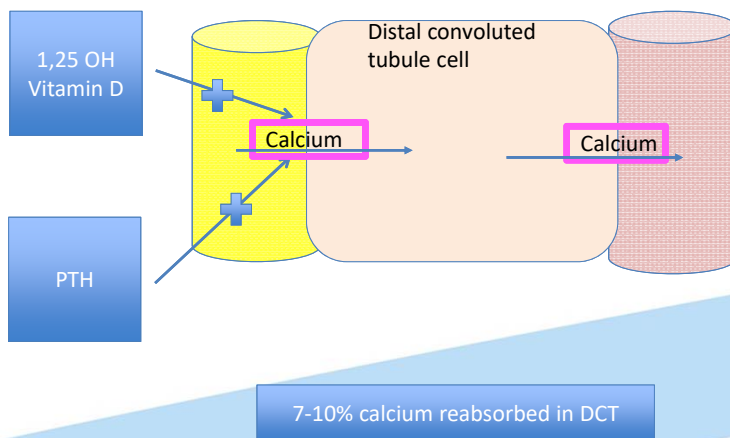
Calcium Reabsorption- Proximal Tubule



American Urological Association
Education & Research, Inc.

Frick K K , and Bushinsky D A JASN 2003;14:1082-1095
©2003 by American Society of Nephrology

Calcium Reabsorption – Distal Convoluted Tubule



American Urological Association
Education & Research, Inc.

Clin J Am Soc Nephrol 9: 2147–2163, 2014

Question

- A 48 year old obese man has recurrent kidney stones. 24 hour urine chemistry shows hypercalciuria and high urine sodium. In addition to recommending drinking 100 ounces fluid per day, what else will you advise?
- A – low calcium diet
- B – low salt diet
- C – hydrochlorothiazide
- E – furosemide



American
Urological
Association
Education & Research, Inc.

Tubular Transport of Substances Related to Kidney Stones

- Citrate
 - Reabsorbed in proximal tubule
 - Hypokalemia increases citrate reabsorption
 - ** thiazide diuretics cause hypokalemia which can result in low urinary citrate



American
Urological
Association
Education & Research, Inc.

Hyponatremia

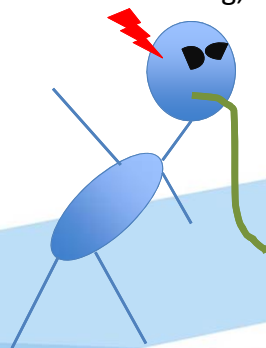


American
Urological
Association
Education & Research, Inc.

Hyponatremia=Water intoxication

Signs and Symptoms

- Mild decrease in serum sodium
 - neurologic symptoms, including gait instability, memory impairment, and cognitive decline
- sodium <125 meq/L
 - Headache, nausea, vomiting, seizures



American
Urological
Association
Education & Research, Inc.

JAMA 281: 2299–2304, 1999

Clin J Am Soc Nephrol 10: 852–862, 2015

Age and Sex Associated with Different Sensitivities

- Children at higher risk for hypo-osmolar encephalopathy
- Majority of postoperative hyponatremia with fatal outcomes reported in women
 - especially postmenopausal women

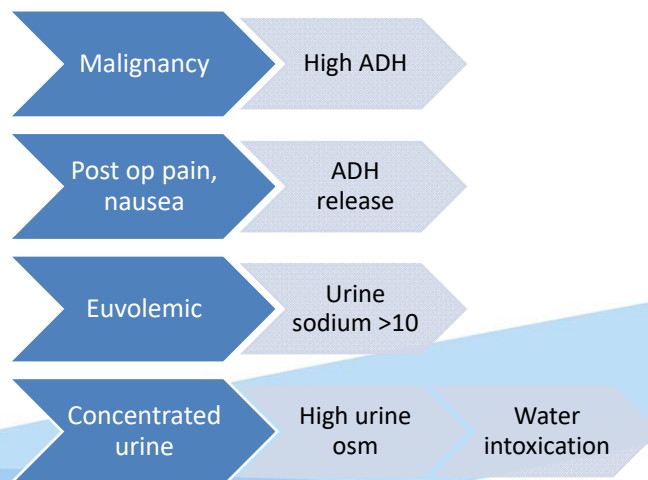


American
Urological
Association
Education & Research, Inc.

JAMA 281: 2299–2304, 1999

Clin J Am Soc Nephrol 10: 852–862, 2015

SIADH



American
Urological
Association
Education & Research, Inc.

Question

- 75 yo man with metastatic prostate cancer incidentally found to have sodium 125 on routine labs. He is admitted to hospital and noted to have fatigue but no other symptoms. Blood pressure is 120/70 without orthostasis. Urine osmolality is 550 mOsm/L, urine sodium is 40 meq/L. What is the treatment?
- A – IV 3% saline
- B – fluid restriction
- C – IV normal saline
- D – furosemide



American
Urological
Association
Education & Research, Inc.

Obstructive Uropathy

Stage of obstruction	Afferent arteriole resistance	Glomerular capillary hydraulic pressure
1-2 hour unilateral	↓	↑
24 hour	↑	↓
After release	↑	↓

- Despite lack of direct glomerular damage, obstruction results in decrease in GFR
 - Due to increase pressure in tubules
 - alterations in renal hemodynamics



American
Urological
Association
Education & Research, Inc.

Relief of Acute Obstruction

- Renal blood flow increases
 - Systemic natriuretic influences
 - Volume accumulation and natriuretic hormones
- Salt and water excretion 5-9 times normal after relief of obstruction
 - Natriuretic substances
 - Tubular cell injury
- Cannot concentrate nor dilute urine

- GFR remains low



American
Urological
Association
Education & Research, Inc.

Post-Obstructive Diuresis Treatment

- Excessive volume replacement prolongs diuresis
- Volume or water replacement appropriate only when there is hypovolemia or hypernatremia
- Urine is isosthenuric
 - Replacement fluid: 0.45% saline at a rate less than urine output



American
Urological
Association
Education & Research, Inc.

Metabolic Alkalosis

- Hypovolemic
 - Low urine chloride
 - Hypovolemic signals increase in aldosterone resulting in hydrogen secretion
 - Improves with volume expansion and potassium
- Hypervolemic
 - Glucocorticoid excess
 - Mineralocorticoid excess



American
Urological
Association
Education & Research, Inc.

Type 1 RTA

- Most significant RTA to urologists
- Failure to excrete protons
- Non gap acidosis with hypokalemia
- High urine pH - hypocitraturia
- Calcium phosphate stones and nephrocalcinosis
- Tx potassium citrate



American
Urological
Association
Education & Research, Inc.

Type 2 RTA

- Proximal tubule
- No hypocitraturia
- Unlikely to develop kidney stones



American
Urological
Association
Education & Research, Inc.

Type 4 RTA

- More significant to internists
- Develops in setting of diabetes
- Hyporeninemic, hypoaldosterone
- Acidic urine with hyperkalemia and metabolic acidosis



American
Urological
Association
Education & Research, Inc.

Question

- 81 yo man post op day #1 after transurethral resection of bladder tumor has abdominal pain and the following labs:
 - Sodium 129, Potassium 6, Bicarb 26, BUN 39, Creatinine 3.1 mg/dL (baseline 1), normal calcium and phosphorus
- What is the cause of lab abnormalities?
- A – rhabdomyolysis
 - B – acute tubular necrosis
 - C – reabsorption of urine in peritoneal cavity
 - D – low GFR



American
Urological
Association
Education & Research, Inc.

Key Points

- Fine tuning of water balance occurs in collecting duct
 - Mediated by anti-diuretic hormone
 - Desmopressin
- Type 1 /distal RTA associated with calcium phosphate kidney stones
- Management of post obstructive diuresis includes hypotonic fluids at rate lower than urine output



American
Urological
Association
Education & Research, Inc.

Hypertension - Definition

- Normal – BP < 120/80
- Pre-hypertension BP 120-139/80-89
- Hypertension BP >140/90
- Resistant hypertension
 - SBP >140 despite 3 medications, including a diuretic, at max dose

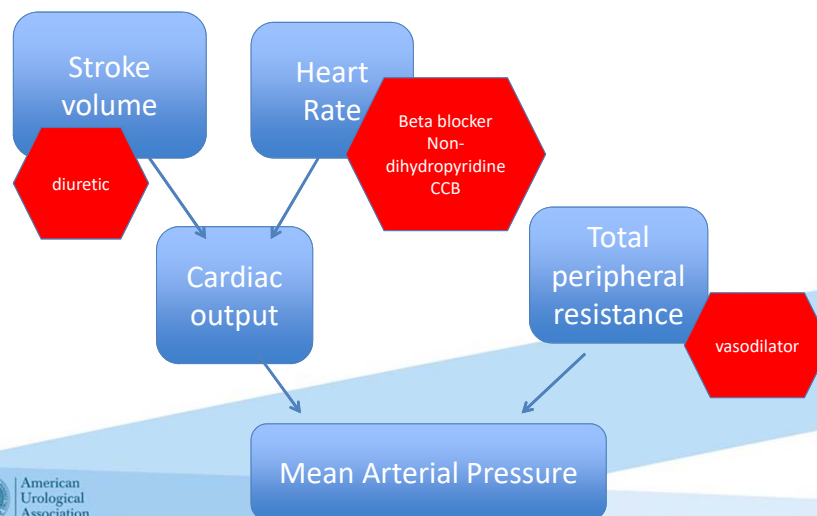
Hypertension

- IDEALLY - Office BP should be measured according to American Heart Association guidelines
 - 3 blood pressures, 2 minutes apart with patient sitting quietly
 - This is used in hypertension trials
- This rarely occurs in typical clinic settings

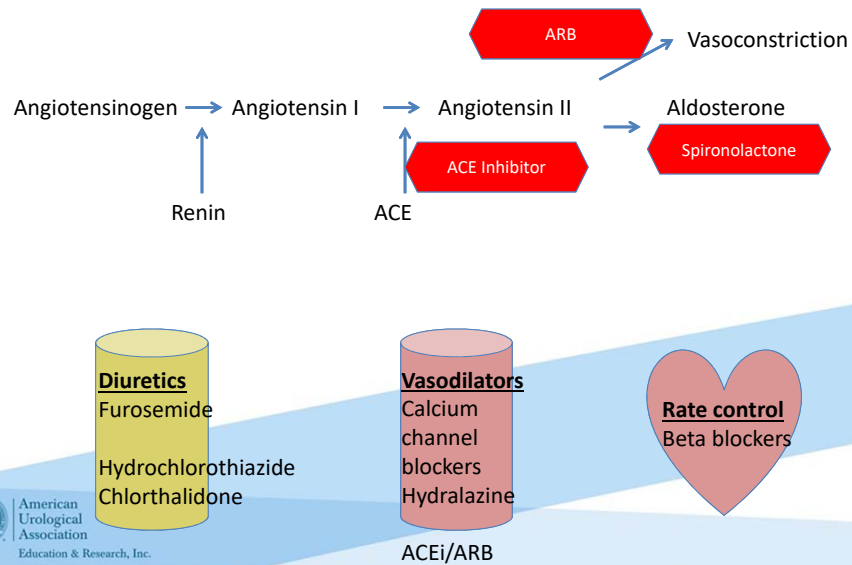
Blood Pressure Targets

- Generally target BP <140/90
 - In adults less than 60, initiate therapy for BP >140/90
- If no stroke or diabetes
- +/- chronic kidney disease
- Target <120 systolic (SPRINT trial)

HTN



antiHTN Medication Review



BP Medications

- Thiazide (chlorthalidone, hydrochlorothiazide)
 - Hypokalemia, hyperglycemia, hypercalcemia, hypertriglyceridemia
- ACE inhibitor (lisinopril, enalapril, captopril)
 - Hemodynamic rise in creatinine, hyperkalemia
- Angiotensin receptor blocker (losartan, candesartan)
- Calcium channel blocker (amlodipine, diltiazem)
- Loop diuretic (furosemide)
- Beta blocker (metoprolol)
 - No benefit in absence of coronary artery disease

Renal Artery Stenosis

- In unilateral renal artery stenosis
 - Renin is released
 - -> angiotensin II and aldosterone
 - -> contralateral kidney has natriuresis and maintains euvoemia
- In renal artery stenosis with solitary kidney
 - Renin is released
 - -> angiotensin II and aldosterone act to expand volume
 - -> no contralateral kidney to for natriuresis



American
Urological
Association
Education & Research, Inc.

Atherosclerotic Renal Artery Stenosis

- Present 1-5% of people with hypertension
- Often in combination with coronary artery disease or peripheral artery disease
- Changes in renal blood flow seen with >70% renal artery lumen obstruction
- 10-20 mmHg pressure difference in aorta to post-stenotic renal artery results in increased renin

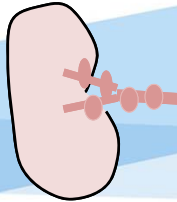


American
Urological
Association
Education & Research, Inc.

Derx FH, Schalekamp MA. Renal artery stenosis and hypertension. Lancet 1994;344:237-9

Fibromuscular Dysplasia

- Medial fibroplasia – most common subtype
- Renal arteries in ~70% cases
- Cerebral arteries in ~25% cases
- Tends to affect women
- “beads on a string”
 - Serial intravascular webs with aneurysm in between



Management – Renal Artery Stenosis

- Fibromuscular dysplasia (FMD)
 - General consensus is manage with angioplasty
 - Better control of BP
 - Avoid long term consequences of activated renin angiotensin aldosterone system
- Atherosclerotic renal artery stenosis (ARAS)
 - Manage medically
 - BP control with ACE/ARB and diuretic
 - Cholesterol control with statin

The NEW ENGLAND
JOURNAL of MEDICINE

ESTABLISHED IN 1812 JANUARY 2, 2014 VOL. 370 NO. 1

Stenting and Medical Therapy
for Atherosclerotic Renal-Artery Stenosis

- CORAL study
- 947 patients with renal artery stenosis
 - Excluded fibromuscular dysplasia, creatinine >4 mg/dL and kidney size less than 7 cm
- Randomized to medical therapy alone or medical therapy + renal artery stenting
- Medical therapy = ARB, Statin, calcium channel blocker, +/- HCTZ

CORAL

- Primary endpoint – major cardiovascular or renal event
- Median follow up 43 months
- No difference in primary endpoint
 - 35.1% stent group
 - 35.8% medical therapy group
 - hazard ratio, 0.94; 95% [CI], 0.76 to 1.17; P=0.58
- No significant difference in all cause mortality

Question

- In a patient with 2 kidneys, unilateral renal artery stenosis, which medication should be added for renal protection and to get at the driving mechanism for HTN?
- A – lisinopril
- B – hydralazine
- C – metoprolol
- D – amlodipine



American
Urological
Association
Education & Research, Inc.

Bilateral Renal Artery Stenosis

- Management is expert opinion
- If no flash pulmonary edema, most would still use lisinopril
- Can expect and can permit hemodynamic rise in creatinine
 - Monitor closely



American
Urological
Association
Education & Research, Inc.

Key Points

- Atherosclerotic renovascular disease is prevalent in patients with HTN and CKD
- CTA & MRA can aid in diagnosis
 - Risk of AKI with iodinated contrast and gadolinium associated with nephrogenic systemic fibrosis
- Duplex US is highly operator dependent
- Pursuing diagnosis may not be necessary as medical management is preferred over intervention



American
Urological
Association
Education & Research, Inc.

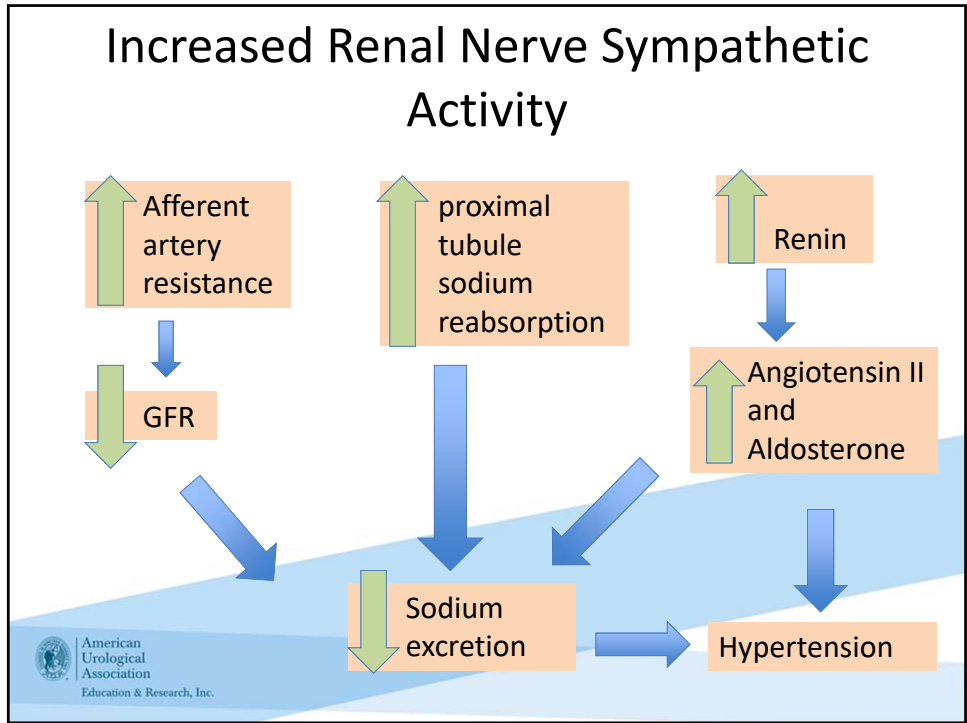
Renal Denervation

- Physiologic basis:
 - Afferent artery has greatest innervation
 - Renal tubules and juxtaglomerular apparatus also innervated
- Procedure:
 - catheter-based radiofrequency denervation of the renal arteries
 - Less invasive compared to surgical denervation or nephrectomy



American
Urological
Association
Education & Research, Inc.

Am J Physiol Renal Physiol 309: F583–F594,
2015



SYMPPLICITY 3

The **NEW ENGLAND JOURNAL of MEDICINE**

ORIGINAL ARTICLE

A Controlled Trial of Renal Denervation for Resistant Hypertension

Deepak L. Bhatt, M.D., M.P.H., David E. Kandzari, M.D., William W. O'Neill, M.D.,
Ralph D'Agostino, Ph.D., John M. Flack, M.D., M.P.H., Barry T. Katzen, M.D.,
Martin B. Leon, M.D., Minglei Liu, Ph.D., Laura Mauri, M.D., Manuela Negoita, M.D.,
Sidney A. Cohen, M.D., Ph.D., Suzanne Oparil, M.D., Krishna Rocha-Singh, M.D.,
Raymond R. Townsend, M.D., and George L. Bakris, M.D.,
for the SYMPPLICITY HTN-3 Investigators*

ABSTRACT

American Urological Association
Education & Research, Inc.

N Engl J Med 2014;370:1393-401.

SYMPPLICITY 3

- Randomized 2:1 to renal denervation vs sham procedure (renal angiography alone)
- Both groups had a decrease in both office blood pressure and 24 hour ambulatory blood pressure
- No benefit to renal denervation based on SYMPPLICITY 3 results



American
Urological
Association
Education & Research, Inc.

N Engl J Med 2014;370:1393-401.

Key Points

- BP goal 140/90 in patients with diabetes +/- CKD and age <60
- BP goal 120/80 consider in absence of diabetes or stroke history
- No benefit to stenting in renal artery stenosis (unless flash pulmonary edema)
- Not enough evidence to support FDA approval of system for renal denervation



American
Urological
Association
Education & Research, Inc.